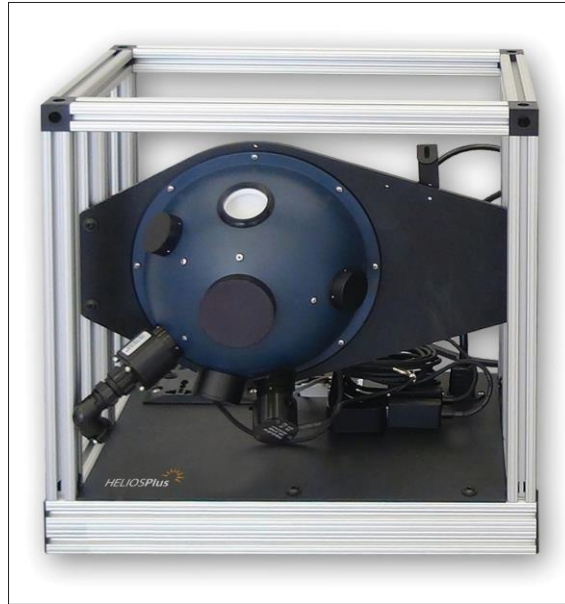


HSA 积分球组件



HELIOS®Plus 积分球组件 (HSA) 是一种创新设计，具有坚固的底盘，用于承载积分球并为我们的光学和电气组件提供一个集成架构和集线器。HSA 是箱体结构，是一种独特的带槽铝结构，主要用于在台式实验室或户外现场使用期间可安装和保护成套系统。有 5 种积分球模型可用于满足不同尺寸的孔径、光谱范围和环境测试需求。

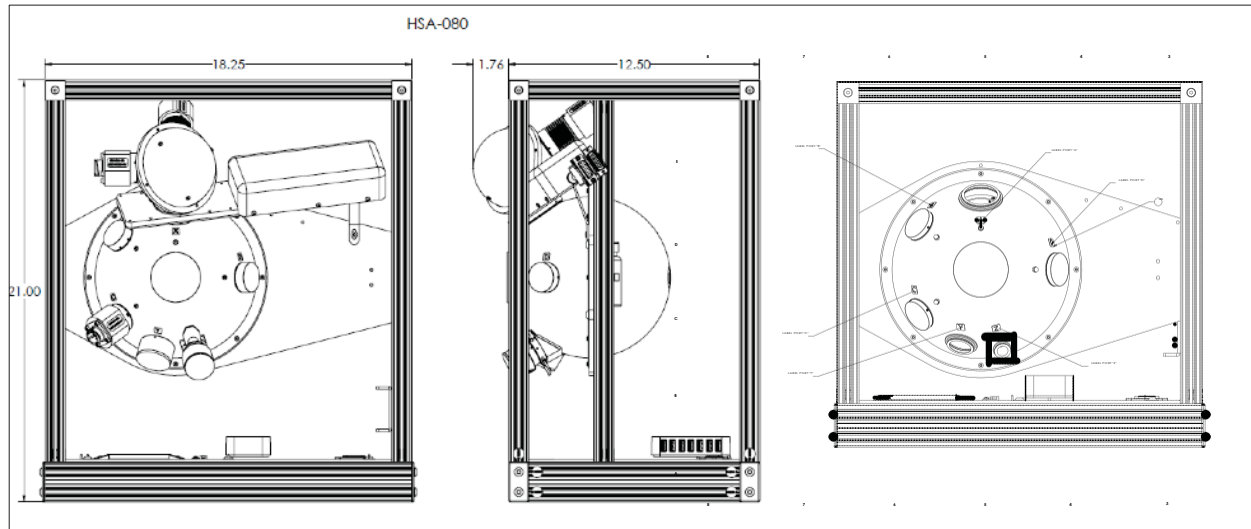
特征

- 坚固的箱体设计，为 HELIOSPlus 组件和系统提供保护和支持
- Spectrafect® 和 Spectralon® 积分球内部漫反射材料可选
- 许多附加开口，可满足当前和未来的要求
- 模块化挡板
- 具有开口端盖子
(请参阅规格以确保采购所需物品)
- 电源通用插头
- (7) 个开口、有源 USB 集线器和电缆布线
- 积分球机箱中的内存功能可用于存储配置和设置
- Spectrafect 涂层修补和工具包
- 可选的积分球便携箱
- 可选暗室套件用于封闭 HELIOSPlus 积分球箱体以最大限度减少杂散光

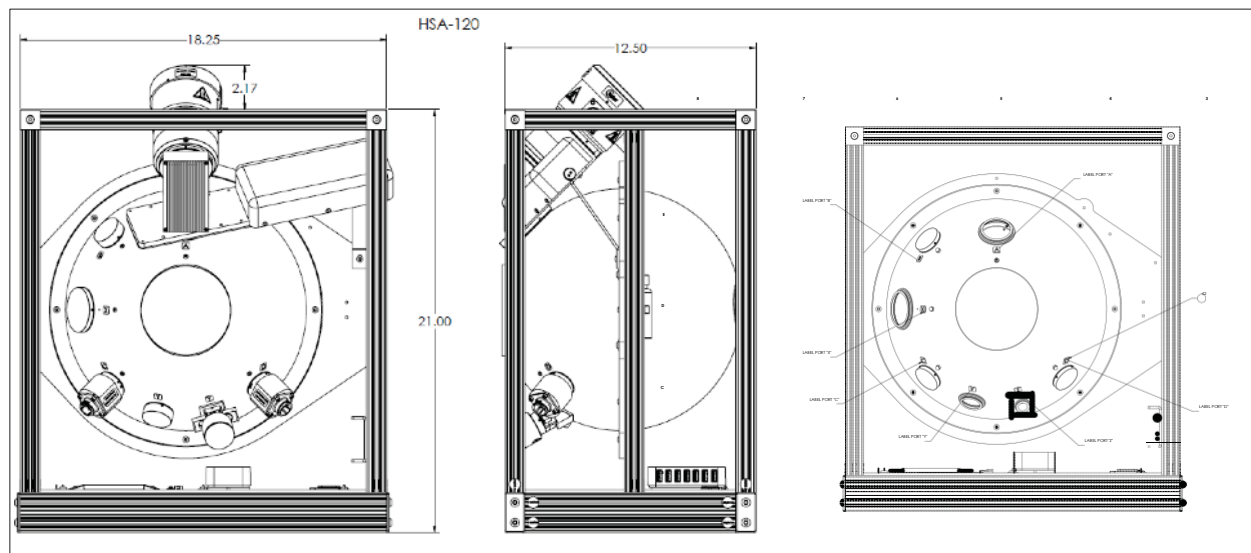
规格参数

型号	HSA-20F	HSA-12F	HSA-08F	HSA-12L	HSA-08L
漫反射涂层/材料:	Spectrafect	Spectralect	Spectralect	Spectralon	Spectralon
积分球内部直径: Inches (Meters)	20 (0.5)	12 (0.3)	8 (0.2)	11.5 (0.29)	7.5 (0.19)
框架类型:	20" Cage	12" Cage	12" Cage	12" Cage	12" Cage
输出开口尺寸: Inches (Meters)	8" (0.2)	4" (0.1)	2" (0.05)	4" (0.1)	2" (0.05)
输出开口盖子(黑色):	(1) 8"	(1) 4"	(1) 2"	(1) 4"	(1) 2"
输入开口数量- (#) 尺寸:	(1)-1.75", (1)-1.5", (4)-1"	(1)-1.75", (1)-1.5", (3)-1"	(1) 1.5", (3) 1"	(1)-1.75", (1)-1.5", (3)-1"	(1) 1.5", (3) 1"
探测器开口数量- (#) 尺寸:	(1) 1", (1) 0.5" w/wedge	(1) 1", (1) 0.5" w/wedge	(1) 1", (1) 0.5" w/wedge	(1) 1", (1) 0.5" w/wedge	(1) 1", (1) 0.5" w/wedge
输入开口衰减器- (#) 尺寸:	None	None	None	None	None
输入开口盖子(白色) – 尺寸:	(3) 1"	(3) 1"	(3) 1"	(3) 1"	(3) 1"
挡板配置:	Diff/Flag/Flag/Flag/Flag	Diff/Flag/Flag/Flag	Diff/Flag/Flag/Flag	Diff/Flag/Flag/Flag	Diff/Flag/Flag/Flag
挡板位置: (O'Clock)	12/1/4/8/10	12/4/8/10	12/3/8/10	12/4/8/10	12/3/8/10
Baffle Plugs:	N/A	N/A	N/A	(3) SL Baffle Plugs	(3) SL Baffle Plugs
Labsphere 工具包	Yes	Yes	Yes	Yes	Yes
Spectralect 涂层 修补工具:	Yes	Yes	Yes	Yes	Yes
电源通用盖子:	(2)	(2)	(2)	(2)	(2)
7 开口有源 USB 集线器:	Yes	Yes	Yes	Yes	Yes

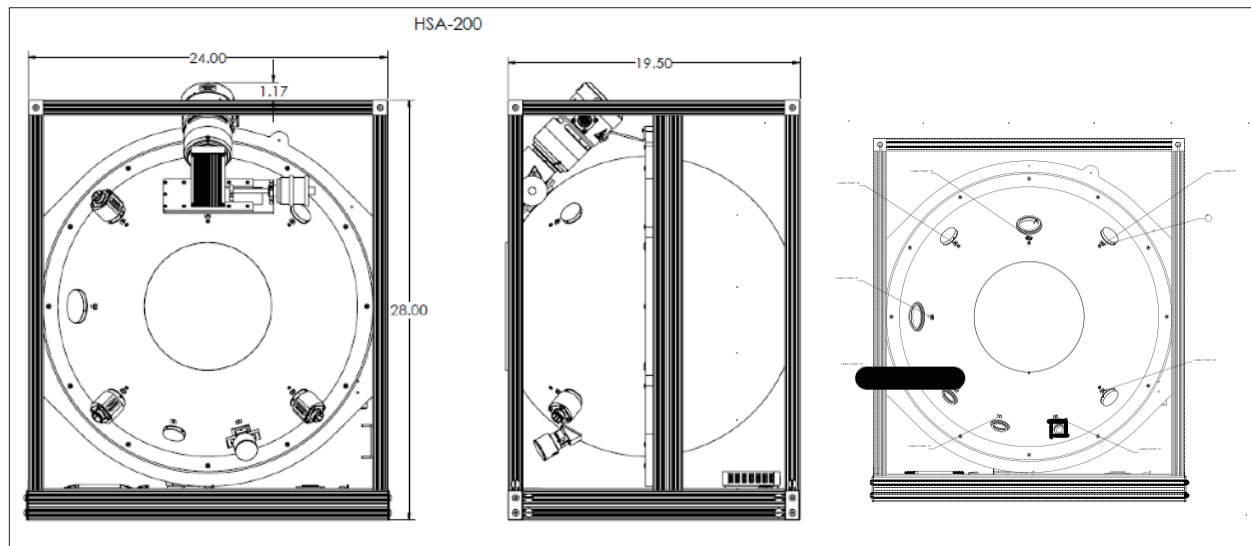
HSA-080 Dimensional Drawing



HSA-120 Dimensional Drawing



HSA-200 Dimensional Drawing



Drawings are representations only and used to indicate the dimensional footprint of the sphere assembly. Any light sources, variable attenuators, and sphere accessories, are for illustrative purposes only and are not included with the sphere assembly.